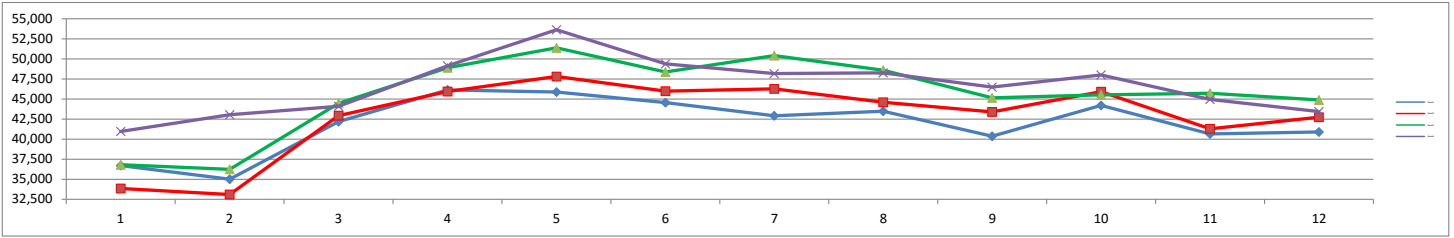
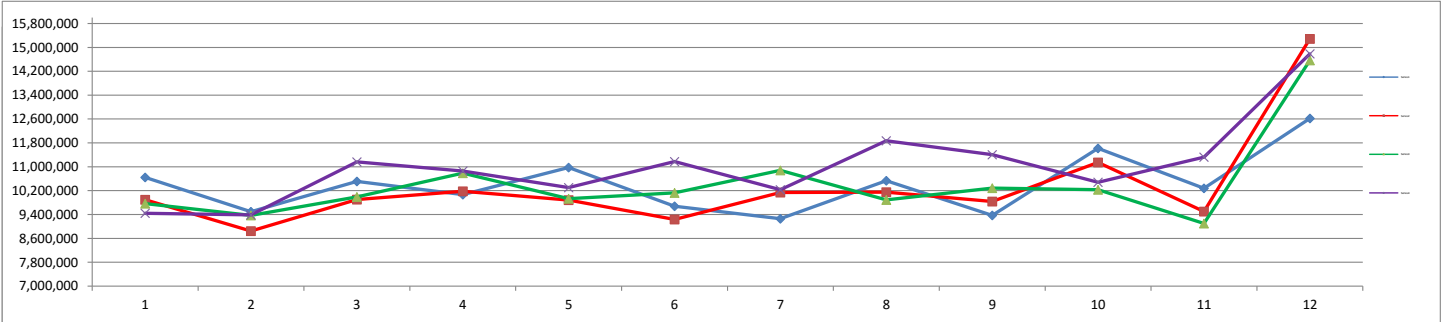
 <b>COLUMBIA METROPOLITAN AIRPORT</b>	Month			Year-to-Date		
	Dec-16	Dec-15	% Change	2016	2015	% Change
<b>ENPLANED PASSENGERS</b>						
AMERICAN EAGLE	17,953	17,859	0.53%	224,488	216,111	3.88%
UNITED EXPRESS	7,704	8,020	-3.94%	95,441	91,149	4.71%
DELTA	17,775	19,003	-6.46%	239,594	237,790	0.76%
ALLEGIANT	0	0	0.00%	0	0	0.00%
REPUBLIC AIRLINES	0	0	0.00%	0	1,335	-100.00%
VISION AIR	0	0	0.00%	0	0	0.00%
<b>Enplaned Passenger Total</b>	<b>43,432</b>	<b>44,882</b>	<b>-3.23%</b>	<b>559,523</b>	<b>546,385</b>	<b>2.40%</b>
<b>LANDED WEIGHT (1,000 LB UNITS)</b>						
AMERICAN EAGLE	21,241	21,747	-2.33%	259,037	252,078	2.76%
UNITED EXPRESS	8,133	8,071	0.77%	101,184	98,149	3.09%
DELTA	20,789	22,582	-7.94%	273,064	272,371	0.25%
ALLEGIANT	0	0	0.00%	0	0	0.00%
REPUBLIC AIRLINES	0	0	0.00%	0	2,839	-100.00%
VISION AIR	0	0	0.00%	0	0	0.00%
<b>Subtotal</b>	<b>50,163</b>	<b>52,400</b>	<b>-4.27%</b>	<b>633,285</b>	<b>625,437</b>	<b>1.25%</b>
MOUNTAIN AIR CARGO	796	868	-8.29%	9,241	9,420	-1.90%
FEDERAL EXPRESS	8,514	8,754	-2.74%	92,850	93,232	-0.41%
UNITED PARCEL SERVICE	41,964	44,071	-4.78%	284,012	274,775	3.36%
WIGGINS	0	247	-100.00%	377	3,094	-87.82%
MARTINAIRE	170	323	-47.37%	2,171	2,392	-9.24%
AIR CARGO CARRIERS	1,604	1,567	2.36%	18,803	18,218	3.21%
<b>Subtotal</b>	<b>53,048</b>	<b>55,830</b>	<b>-4.98%</b>	<b>407,454</b>	<b>401,131</b>	<b>1.58%</b>
<b>Landed Weight Total</b>	<b>103,211</b>	<b>108,230</b>	<b>-4.64%</b>	<b>1,040,739</b>	<b>1,026,568</b>	<b>1.38%</b>
<b>LANDINGS</b>						
AMERICAN EAGLE	396	425	-6.82%	5,009	5,126	-2.28%
UNITED EXPRESS	183	167	9.58%	2,095	2,048	2.29%
DELTA	253	293	-13.65%	3,381	3,488	-3.07%
ALLEGIANT	0	0	0.00%	0	0	0.00%
REPUBLIC AIRLINES	0	0	0.00%	0	30	-100.00%
VISION AIR	0	0	0.00%	0	0	0.00%
<b>Subtotal</b>	<b>832</b>	<b>885</b>	<b>-5.99%</b>	<b>10,485</b>	<b>10,692</b>	<b>-1.94%</b>
MOUNTAIN AIR CARGO	22	24	-8.33%	256	261	-1.92%
FEDERAL EXPRESS	43	42	2.38%	468	467	0.21%
UNITED PARCEL SERVICE	135	137	-1.46%	1,018	971	4.84%
WIGGINS	0	19	-100.00%	29	238	-87.82%
MARTINAIRE	20	38	-47.37%	255	281	-9.25%
AIR CARGO CARRIERS	64	63	1.59%	766	759	0.92%
<b>Subtotal</b>	<b>284</b>	<b>323</b>	<b>-12.07%</b>	<b>2,792</b>	<b>2,977</b>	<b>-6.21%</b>
<b>Landings Total</b>	<b>1,116</b>	<b>1,208</b>	<b>-7.62%</b>	<b>13,277</b>	<b>13,669</b>	<b>-2.87%</b>
<b>ENPLANED FREIGHT / CARGO</b>						
DELTA	5	5	0.00%	53	53	0.00%
MOUNTAIN AIR CARGO	73	75	-2.67%	762	830	-8.19%
FEDERAL EXPRESS	711	735	-3.27%	7,975	8,251	-3.35%
UNITED PARCEL SERVICE	2,763	2,913	-5.15%	23,090	22,850	1.05%
WIGGINS	0	12	-100.00%	11	87	-87.36%
MARTINAIRE	11	13	-15.38%	179	182	-1.65%
AIR CARGO CARRIERS	85	39	117.95%	962	730	31.78%
<b>Enplaned Cargo Total</b>	<b>3,648</b>	<b>3,792</b>	<b>-3.80%</b>	<b>33,032</b>	<b>32,983</b>	<b>0.15%</b>

**MONTHLY ENPLANED PASSENGERS**  
2013 - 2016



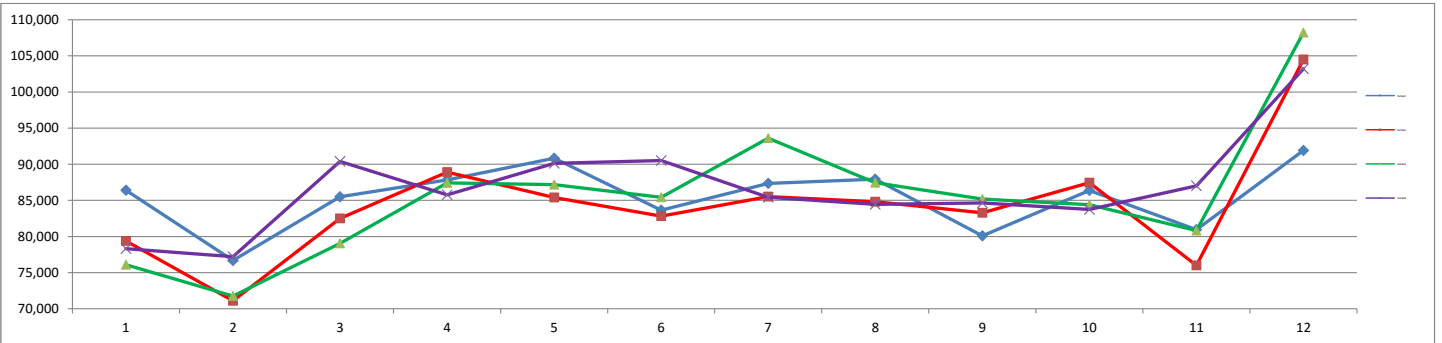
	Jan	Feb	Mar	Apr	May	Jun	Jul	Aug	Sep	Oct	Nov	Dec	Grand Total
2013	36,703	35,006	42,175	46,129	45,865	44,557	42,912	43,476	40,365	44,196	40,657	40,883	502,924
2014	33,851	33,094	42,923	45,935	47,810	45,975	46,258	44,601	43,391	45,921	41,285	42,725	513,769
2015	36,802	36,231	44,464	48,899	51,377	48,369	50,406	48,591	45,138	45,515	45,712	44,882	546,386
2016	40,956	43,036	44,092	49,141	53,632	49,373	48,182	48,266	46,475	47,989	44,949	43,432	559,523

**MONTHLY TOTAL CARGO**  
2013 - 2016



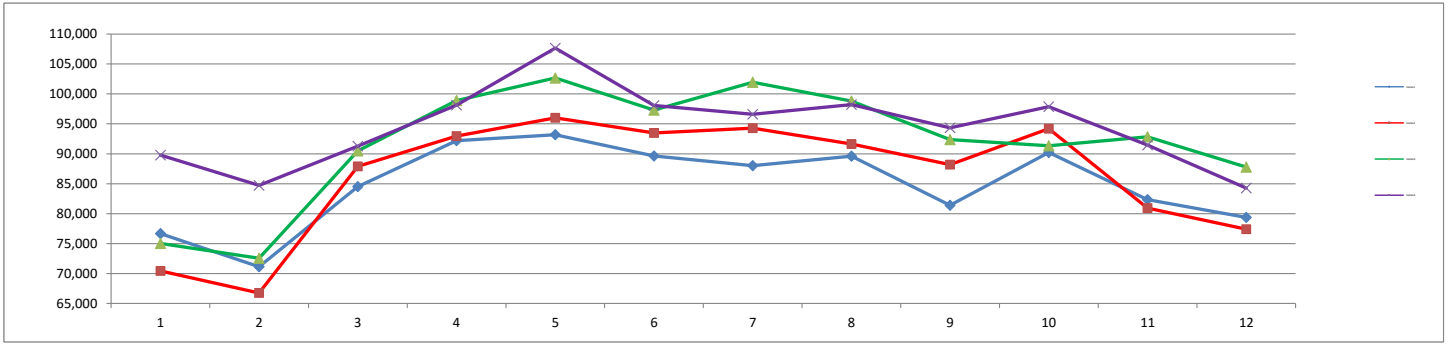
	Jan	Feb	Mar	Apr	May	Jun	Jul	Aug	Sep	Oct	Nov	Dec	Grand Total
2013	10,644,000	9,494,000	10,510,000	10,068,000	10,972,000	9,676,000	9,260,000	10,534,000	9,370,000	11,616,000	10,280,000	12,618,000	125,042,000
2014	9,898,000	8,846,000	9,900,000	10,180,000	9,884,000	9,238,000	10,136,000	10,152,000	9,834,000	11,144,000	9,500,000	15,286,000	123,998,000
2015	9,768,000	9,370,000	9,988,000	10,788,000	9,930,000	10,126,000	10,880,000	9,892,000	10,286,000	10,234,000	9,100,000	14,564,000	124,926,000
2016	9,444,000	9,388,000	11,164,000	10,856,000	10,304,000	11,174,000	10,234,000	11,874,000	11,408,000	10,482,000	11,320,000	14,782,000	132,430,000

**MONTHLY LANDED WEIGHT**  
2013 - 2016



	Jan	Feb	Mar	Apr	May	Jun	Jul	Aug	Sep	Oct	Nov	Dec	Grand Total
2012	86,396	76,686	85,504	87,833	90,837	83,653	87,337	87,927	80,081	86,381	80,947	91,914	1,025,496
2013	79,392	71,097	82,511	88,911	85,392	82,805	85,518	84,810	83,276	87,442	75,984	104,496	1,011,634
2014	76,081	71,755	79,034	87,409	87,187	85,418	93,617	87,441	85,175	84,411	80,810	108,230	1,026,568
2015	78,313	77,208	90,384	85,766	90,122	90,513	85,423	84,439	84,632	83,731	86,997	103,211	1,040,739

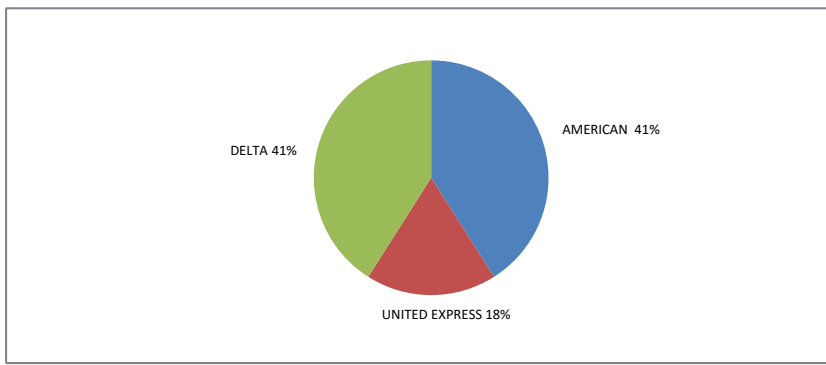
**MONTHLY TOTAL PASSENGERS  
2013 - 2016**



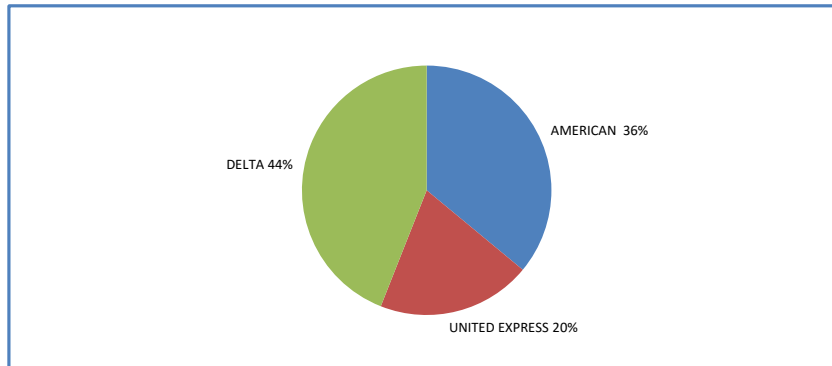
	Jan	Feb	Mar	Apr	May	Jun	Jul	Aug	Sep	Oct	Nov	Dec	Grand Total
2012	76,663	71,126	84,517	92,197	93,179	89,633	88,003	89,591	81,398	90,212	82,327	79,380	1,018,226
2013	70,428	66,743	87,909	92,947	96,006	93,477	94,265	91,628	88,201	94,194	80,927	77,408	1,034,133
2014	75,032	72,546	90,492	98,900	102,669	97,297	101,960	98,804	92,360	91,339	92,846	87,766	1,102,011
2015	89,773	84,708	91,287	98,123	107,658	98,060	96,588	98,214	94,336	97,870	91,444	84,268	1,132,329

**YEAR - TO - DATE MARKET SHARE BY CARRIER**

**2016**



**2015**



**2014**

