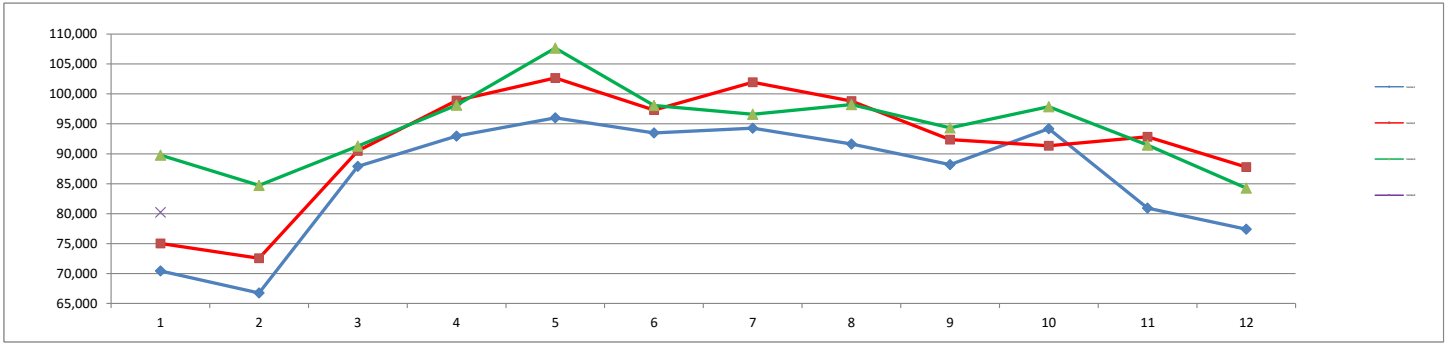
 COLUMBIA METROPOLITAN AIRPORT	Month			Year-to-Date		
	Jan-17	Jan-16	% Change	2017	2016	% Change
ENPLANED PASSENGERS						
AMERICAN EAGLE	16,894	17,065	-1.00%	16,894	17,065	-1.00%
UNITED EXPRESS	6,483	6,689	-3.08%	6,483	6,689	-3.08%
DELTA	15,070	17,202	-12.39%	15,070	17,202	-12.39%
Enplaned Passenger Total	38,447	40,956	-6.13%	38,447	40,956	-6.13%
LANDED WEIGHT (1,000 LB UNITS)						
AMERICAN EAGLE	22,623	21,194	6.74%	22,623	21,194	6.74%
UNITED EXPRESS	7,816	7,386	5.82%	7,816	7,386	5.82%
DELTA	20,312	19,192	5.84%	20,312	19,192	5.84%
Subtotal	50,751	47,772	6.24%	50,751	47,772	6.24%
MOUNTAIN AIR CARGO	723	759	-4.74%	723	759	-4.74%
FEDERAL EXPRESS	7,128	7,326	-2.70%	7,128	7,326	-2.70%
UNITED PARCEL SERVICE	20,869	20,533	1.64%	20,869	20,533	1.64%
WIGGINS	0	260	-100.00%	0	260	-100.00%
MARTINAIRE	162	179	-9.50%	162	179	-9.50%
AIR CARGO CARRIERS	1,623	1,484	9.37%	1,623	1,484	9.37%
Subtotal	30,505	30,541	-0.12%	30,505	30,541	-0.12%
Landed Weight Total	81,256	78,313	3.76%	81,256	78,313	3.76%
LANDINGS						
AMERICAN EAGLE	420	412	1.94%	420	412	1.94%
UNITED EXPRESS	167	162	3.09%	167	162	3.09%
DELTA	244	263	-7.22%	244	263	-7.22%
Subtotal	831	837	-0.72%	831	837	-0.72%
MOUNTAIN AIR CARGO	20	21	-4.76%	20	21	-4.76%
FEDERAL EXPRESS	36	37	-2.70%	36	37	-2.70%
UNITED PARCEL SERVICE	75	74	1.35%	75	74	1.35%
WIGGINS	0	20	-100.00%	0	20	-100.00%
MARTINAIRE	19	21	-9.52%	19	21	-9.52%
AIR CARGO CARRIERS	65	61	6.56%	65	61	6.56%
Subtotal	215	234	-8.12%	215	234	-8.12%
Landings Total	1,046	1,071	-2.33%	1,046	1,071	-2.33%
ENPLANED FREIGHT / CARGO						
DELTA	6	4	50.00%	6	4	50.00%
MOUNTAIN AIR CARGO	63	59	6.78%	63	59	6.78%
FEDERAL EXPRESS	565	592	-4.56%	565	592	-4.56%
UNITED PARCEL SERVICE	1,574	1,762	-10.67%	1,574	1,762	-10.67%
WIGGINS	0	7	-100.00%	0	7	-100.00%
MARTINAIRE	10	13	-23.08%	10	13	-23.08%
AIR CARGO CARRIERS	59	61	-3.28%	59	61	-3.28%
Enplaned Cargo Total	2,277	2,498	-8.85%	2,277	2,498	-8.85%

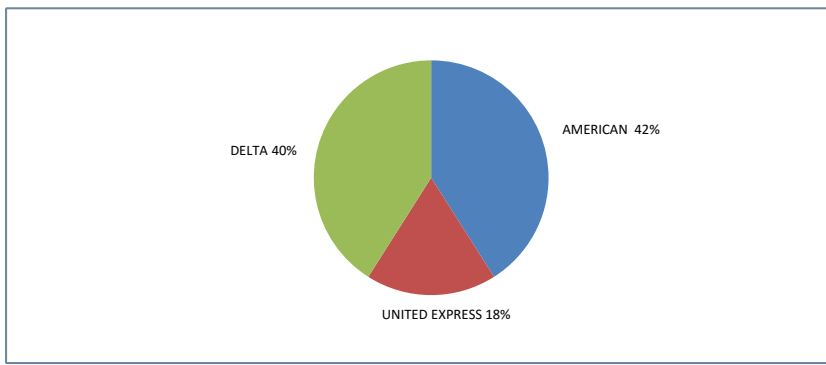
**MONTHLY TOTAL PASSENGERS
2014 - 2017**



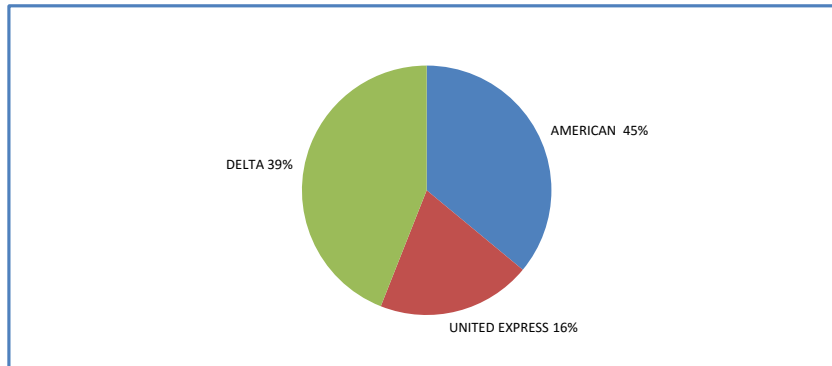
	Jan	Feb	Mar	Apr	May	Jun	Jul	Aug	Sep	Oct	Nov	Dec	Grand Total
2014	70,428	66,743	87,909	92,947	96,006	93,477	94,265	91,628	88,201	94,194	80,927	77,408	1,034,133
2015	75,032	72,546	90,492	98,900	102,669	97,297	101,960	98,804	92,360	91,339	92,846	87,766	1,102,011
2016	89,773	84,708	91,287	98,123	107,658	98,060	96,588	98,214	94,336	97,870	91,444	84,268	1,132,329
2017	80,220												80,220

YEAR - TO - DATE MARKET SHARE BY CARRIER

2017



2016



2015

