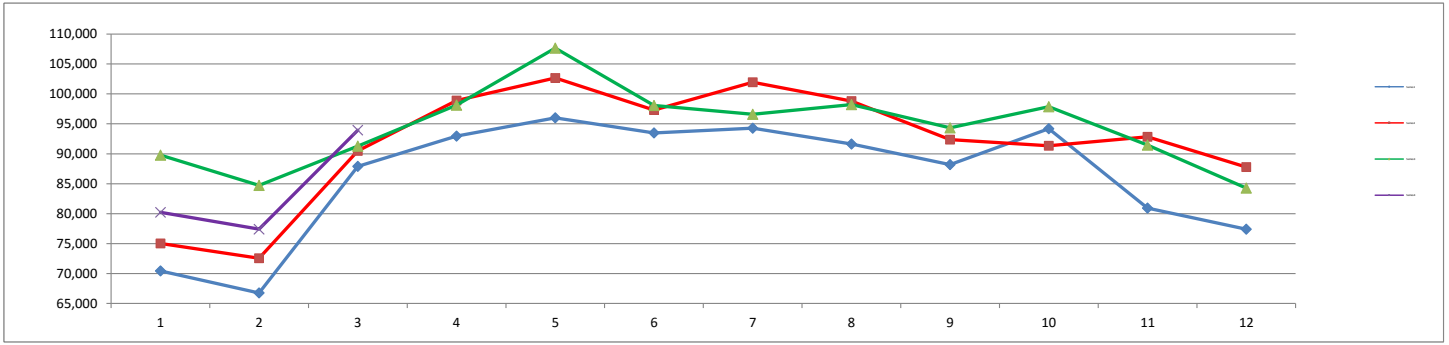
 COLUMBIA METROPOLITAN AIRPORT	Month			Year-to-Date		
	Mar-17	Mar-16	% Change	2017	2016	% Change
ENPLANED PASSENGERS						
AMERICAN EAGLE	20,744	18,460	12.37%	54,427	53,399	1.93%
UNITED EXPRESS	7,479	8,261	-9.47%	19,966	22,334	-10.60%
DELTA	18,255	17,371	5.09%	48,607	52,351	-7.15%
Enplaned Passenger Total	46,478	44,092	5.41%	123,000	128,084	-3.97%
LANDED WEIGHT (1,000 LB UNITS)						
AMERICAN EAGLE	24,468	22,575	8.39%	68,242	64,765	5.37%
UNITED EXPRESS	8,293	9,581	-13.44%	23,146	24,951	-7.23%
DELTA	21,750	23,198	-6.24%	61,398	60,645	1.24%
Subtotal	54,511	55,354	-1.52%	152,786	150,361	1.61%
MOUNTAIN AIR CARGO	868	832	4.33%	2,314	2,323	-0.39%
FEDERAL EXPRESS	9,021	8,316	8.48%	23,277	22,968	1.35%
UNITED PARCEL SERVICE	23,183	24,035	-3.54%	64,373	64,679	-0.47%
WIGGINS	0	0	0.00%	0	377	-100.00%
MARTINAIRE	196	204	-3.92%	528	562	-6.05%
AIR CARGO CARRIERS	1,702	1,643	3.59%	4,731	4,635	2.07%
Subtotal	34,970	35,030	-0.17%	95,223	95,544	-0.34%
Landed Weight Total	89,481	90,384	-1.00%	248,009	245,905	0.86%
LANDINGS						
AMERICAN EAGLE	444	441	0.68%	1,254	1,265	-0.87%
UNITED EXPRESS	168	178	-5.62%	477	496	-3.83%
DELTA	263	310	-15.16%	738	824	-10.44%
Subtotal	875	929	-5.81%	2,469	2,585	-4.49%
MOUNTAIN AIR CARGO	24	23	4.35%	64	65	-1.54%
FEDERAL EXPRESS	45	42	7.14%	117	116	0.86%
UNITED PARCEL SERVICE	84	87	-3.45%	233	234	-0.43%
WIGGINS	0	0	0.00%	0	29	-100.00%
MARTINAIRE	23	24	-4.17%	62	66	-6.06%
AIR CARGO CARRIERS	66	69	-4.35%	187	193	-3.11%
Subtotal	242	245	-1.22%	663	703	-5.69%
Landings Total	1,117	1,174	-4.86%	3,132	3,288	-4.74%
ENPLANED FREIGHT / CARGO						
DELTA	7	5	40.00%	17	14	21.43%
MOUNTAIN AIR CARGO	82	79	3.80%	208	200	4.00%
FEDERAL EXPRESS	644	761	-15.37%	1,750	1,964	-10.90%
UNITED PARCEL SERVICE	1,958	2,043	-4.16%	5,101	5,568	-8.39%
WIGGINS	0	0	0.00%	0	11	-100.00%
MARTINAIRE	19	18	5.56%	45	45	0.00%
AIR CARGO CARRIERS	97	90	7.78%	225	218	3.21%
Enplaned Cargo Total	2,807	2,996	-6.31%	7,346	8,020	-8.40%

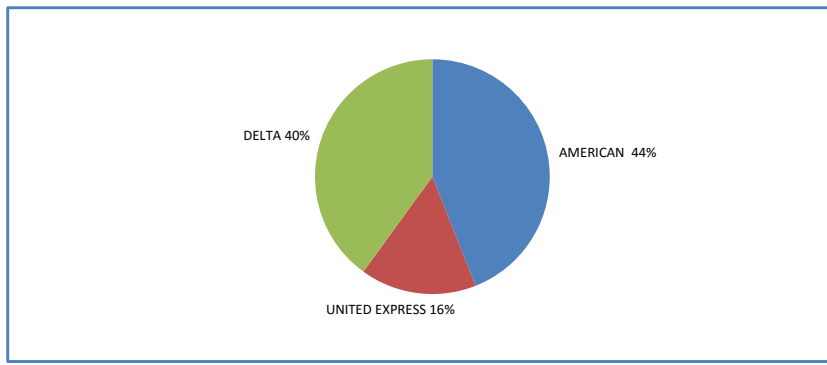
**MONTHLY TOTAL PASSENGERS
2014 - 2017**



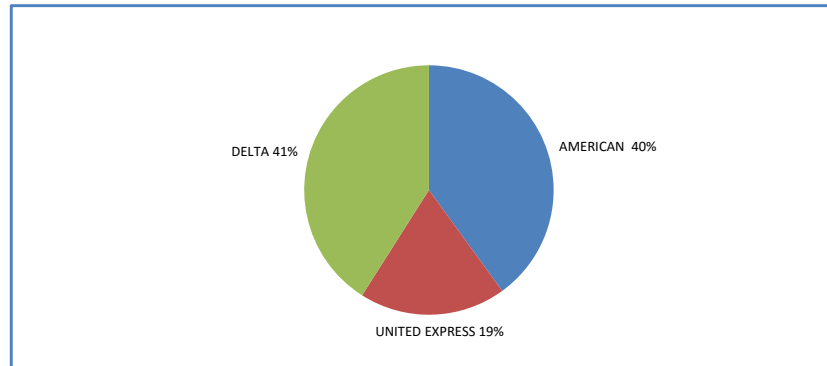
	Jan	Feb	Mar	Apr	May	Jun	Jul	Aug	Sep	Oct	Nov	Dec	Grand Total
2014	70,428	66,743	87,909	92,947	96,006	93,477	94,265	91,628	88,201	94,194	80,927	77,408	1,034,133
2015	75,032	72,546	90,492	98,900	102,669	97,297	101,960	98,804	92,360	91,339	92,846	87,766	1,102,011
2016	89,773	84,708	91,287	98,123	107,658	98,060	96,588	98,214	94,336	97,870	91,444	84,268	1,132,329
2017	80,220	77,410	93,946										251,576

YEAR - TO - DATE MARKET SHARE BY CARRIER

2017



2016



2015

